



# BEVERAGE-AIR

|                 |      |
|-----------------|------|
| Project: _____  | AIA# |
| Item: _____     |      |
| Location: _____ | SIS# |
| Approved: _____ |      |

**DW79HC DEEP WELL SERIES: HORIZONTAL BOTTLE COOLERS**

## HORIZONTAL BOTTLE COOLERS

### DW79HC Frosty Brew Deep Well Series

### Hydrocarbon Series



**MODEL:**  
**DW79HC-B-29**



**5 Year Parts/Labor Warranty Available**  
**7 Year Compressor Warranty**

#### CABINET CONSTRUCTION

- Exterior features durable black painted steel
- Galvanized steel interior and floor
- Full electronic control
- Tops include easy glide, stainless steel lids (3)
- Stainless steel countertop with integral glass stops
- Five (5) epoxy coated adjustable wire dividers
- Bottle opener and cap catcher standard
- Constructed with high cooling RPM fans to provide fast cooling

#### OPTIONS & ACCESSORIES

- 3 Year parts/labor standard, additional 2 year warranty available
- Stainless steel interior
- Wire divider
- Lid locks
- 3" Casters or 6" adjustable leg with plate
- Remote option\* (see note on back on page)

#### REFRIGERATION SYSTEM

- Refrigeration system uses R290 refrigerant to comply with all environmental concerns
- Automatic, non-electric defrost
- Epoxy coated evaporator coil
- Forced air refrigeration system holds product between 30°-32°F



  
Please verify qualifying units by visiting:  
[www.energystar.gov/cfs](http://www.energystar.gov/cfs)

3779 Champion Blvd., Winston-Salem, NC 27105  
1-888-845-9800 Fax: 1-336-245-6453  
Beverage-Air.com Sales@bevair.com



# BEVERAGE-AIR



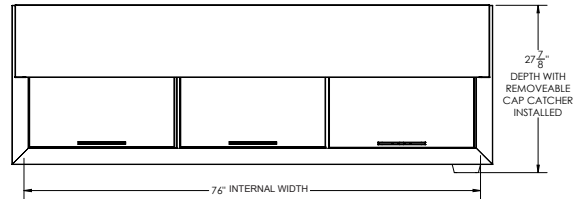
## Horizontal Bottle Coolers - Deep Well Model: DW79HC-B-29

| MODEL                                | DW79HC-B-29         |
|--------------------------------------|---------------------|
| <b>EXTERNAL DIMENSIONAL DATA</b>     |                     |
| Width Overall                        | 80"                 |
| Depth Overall                        | 26 1/2"             |
| Depth Overall with Cap Catcher       | 27 7/8"             |
| Height Overall                       | 33 3/4"             |
| Number of Lids                       | 3                   |
| <b>INTERNAL DIMENSIONAL DATA</b>     |                     |
| NET Capacity (cubic ft.)             | 24.1                |
| Internal Width Overall (in)          | 76"                 |
| Internal Depth Overall (in)          | 22 3/4"             |
| Internal Height Overall at Step (in) | 15 5/8"             |
| Internal Height Overall (in)         | 26 3/4"             |
| Number of Dividers                   | 5                   |
| 12 oz. Bottle Capacity               | 32 Cases            |
| 12 oz. Can Capacity                  | 45 3/4 Cases        |
| <b>ELECTRICAL DATA</b>               |                     |
| Full Load Amperes                    | 2.5                 |
| <b>REFRIGERATION DATA</b>            |                     |
| Horsepower                           | 1/4                 |
| Capacity (BTU/Hr)                    | 1702                |
| Heat Rejection (BTU/Hr)              | 2553                |
| Charge (lbs/grams/ounces)            | 0.2314 / 105 / 3.71 |
| <b>SHIPPING DATA</b>                 |                     |
| Gross Weight - Crated                | 432 lbs             |
| Height - Crated                      | 38"                 |
| Width - Crated                       | 83"                 |
| Depth - Crated                       | 30"                 |

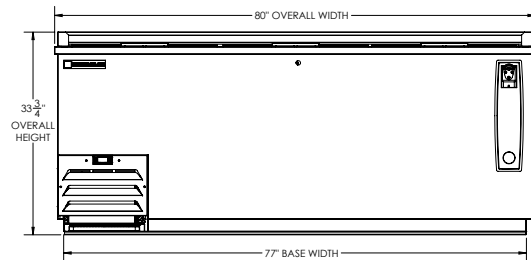
\*NOTE: Remote units are field wired and come with 6" legs.  
Refrigerant must be specified at time of order.

### Model Views

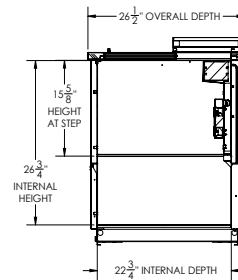
Required Clearance: 3" Sides & Rear



### PLAN VIEW



### ELEVATION VIEW



### SIDE VIEW



### ELECTRICAL CONNECTION



115/60/1  
NEMA 5-15P

Unit pre-wired at factory  
and include 8' long cord  
and plug set.