

Model: HBHK38BSU-L-3



KEGCO 24" WIDE OUTDOOR HOMEBREW TRIPLE TAP BLACK BUILT-IN LEFT HINGE KEGERATOR

FEATURES

- SPECIALLY DESIGNED FOR DISPENSING HOMEBREW BEER
- BUILT-IN OR FREESTANDING USE
- POWERFUL COOLING TECHNOLOGY
- DIGITAL TEMPERATURE CONTROL
- AIR COOLED TOWER PREVENTS FOAM
- LARGE STAINLESS STEEL INTERIOR
- CONVERTS TO A REFRIGERATOR

CAPACITY OPTIONS



INCLUDES HOMEBREW DISPENSE KIT

- 5 lb. aluminum CO₂ tank
- Commercial grade double gauge CO₂ regulator
- Two sets of ball lock home brew keg couplers
- 14.5" tall, 3" diameter polished stainless steel draft tower
- Hoses and fittings



CO₂ TANK



DRAFT TOWER



CO₂ REGULATOR



KEG COUPLERS



(800) 710 9939

support@beveragefactory.com
www.beveragefactory.com

OUR SHOWROOM

8510 Miralani Drive
San Diego, CA 92126

Mon-Fri, 7:00am - 4:00pm

Model: **HBHK38BSU-L-3**

KEGCO 24" WIDE OUTDOOR HOMEBREW TRIPLE TAP BLACK BUILT-IN LEFT HINGE KEGERATOR

| DIMENSIONS | |
|------------------------|-------------|
| Height | 34-1/8" |
| Width | 24" |
| Depth (without handle) | 25" |
| Depth (with handle) | 26.5" |
| Shipping Dimensions | 30"x30"x43" |

| WEIGHT | |
|-----------------|----------|
| Unit Weight | 115 lbs. |
| Shipping Weight | 150 lbs. |

| KEG STORAGE CAPACITIES | |
|--------------------------|---------|
| Full Size / 1/2-Barrel | Holds 1 |
| Pony Size / 1/4-Barrel | Holds 1 |
| 1/4-Barrel Slim | Holds 2 |
| 1/6-Barrel | Holds 3 |
| 5 gal. Ball/Pin Lock Keg | Holds 3 |
| 5-Liter / Mini Keg | Holds 3 |

| KEY FEATURES | |
|----------------------|-----|
| Built-in Capable | Yes |
| Keg Coupler | Yes |
| Security Lock | Yes |
| Regulator | Yes |
| CO ₂ Tank | Yes |
| Outdoor Use | Yes |
| Commercial Use | Yes |

| ELECTRICAL | |
|-------------------------|-----------|
| Electrical Requirements | 115v/60hz |
| Running Amps | 1.7 A |

| CERTIFICATIONS | |
|-----------------------|-----|
| ETL Listed | Yes |
| ETL Sanitation Listed | Yes |

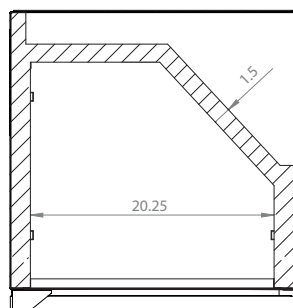
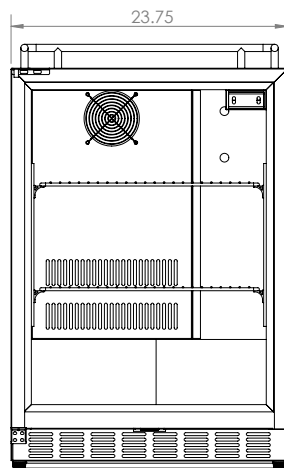
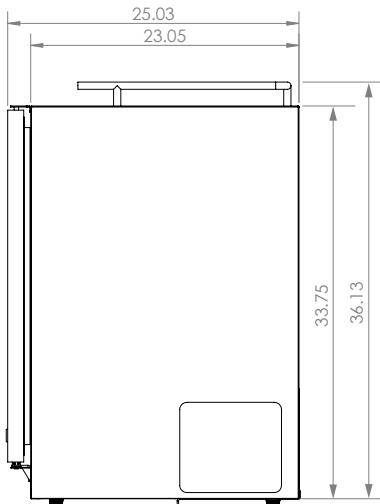
| WARRANTY | |
|-------------------------|---------|
| Labor | 1 Year |
| Parts | 1 Year |
| Compressor (Parts Only) | 5 Years |

| EXTERIOR | |
|------------|-------|
| Cabinet | Black |
| Drip Tray | No |
| Guard Rail | Yes |
| Casters | Yes |

| DOOR | |
|------------------------------|-----------------|
| Color / Material | Stainless Steel |
| Number of Doors | 1 |
| Door Handle | Towel/Curved |
| Field Reversible | No |
| Accepts Custom Overlay Panel | No |

| DRAFT BEER TOWER | |
|-------------------|-----------------|
| Number of Faucets | 3 |
| Material | Stainless Steel |
| Height | 14" |
| Diameter | 3" |

| COOLING SYSTEM | |
|-------------------|------------|
| Type | Compressor |
| Defrost System | Manual |
| Front Ventilation | Yes |



(800) 710 9939

support@beveragefactory.com
www.beveragefactory.com

OUR SHOWROOM

8510 Miralani Drive
San Diego, CA 92126

Mon-Fri, 7:00am - 4:00pm